



WOOD VENEERED
ACOUSTIC WALL & CEILING PANELS

Design with the warmth, elegance and beauty of natural wood, with the added benefit of acoustic absorption. **GRILL™** wood veneered acoustic wall and ceiling panels are available with over 40 wood species, variety of standard and custom blade configurations, module sizes, and two connection options - backer and dowel. **GRILL™** panels install quickly and easily.



MATERIALS

- Face*: Sliced Real Wood Veneer*, 0.6 mm Quality A, or as specified
**FSC® Certified wood veneers available from our UK office*
**Engineered wood veneers available*
**Painted finishes available*
**High Pressure Laminate (HPL) available*

- Finish: UV Premium Interior Lacquered - Clear

- Connection: Backer or Dowel

- Base: 34 mm Thick Fire Retardant MDF

- Back: 2 mm Black Felt Backer

- Core (Optional): 50 mm acoustic core can be installed behind **GRILL™** panels to maximise acoustic performance. Acoustic core and furring typically provided as separate items.

- End Trim (Optional): 17 mm thick x 45 mm high x 2400 mm long Veneer-wrapped MDF to match grills

- Size: **See page 3 & 4 for details.**

ACOUSTICS

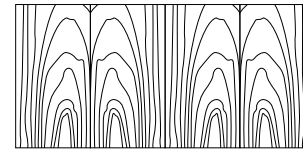
NRC as high as 0.80 according to installation methods and acoustic core backing.

MOUNTING

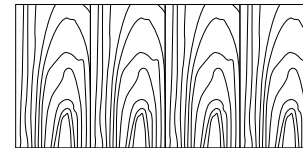
Demountable or direct screw to suspended T-grid (*Suspended T-grid is not included*)

WOOD VENEER

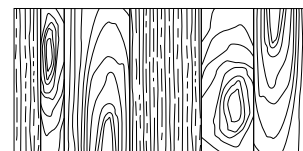
The view-side of panels are finished with a top quality hand-selected veneer. Over 40 wood species are available in stock. Panels are finished in a premium clear lacquer over a three-stage process ensuring only the highest standard and durability. Custom staining and PANTONE, RAL or NCS colour matching is available. Veneer sheets with a width of 10 cm to 20 cm are typically book-matched to ensure continuation. Slip-matched or mismatched sheets can be produced upon request, providing a natural or variable wood art effect.



Book-matched



Slip-matched



Mismatched

FLAMMABILITY

Fire test data performed by independent laboratories. Support documentation available upon request. Note that all data provided is for typical usage.

eomac is adaptable to other situations and custom applications.



- CANADA: CAN/ULC-S 102: Class 1
- EU: EN 13501-1: Class B, s2, d0
- USA: ASTM E-84: Class A
NFPA 265; UBC 8-2: Passes

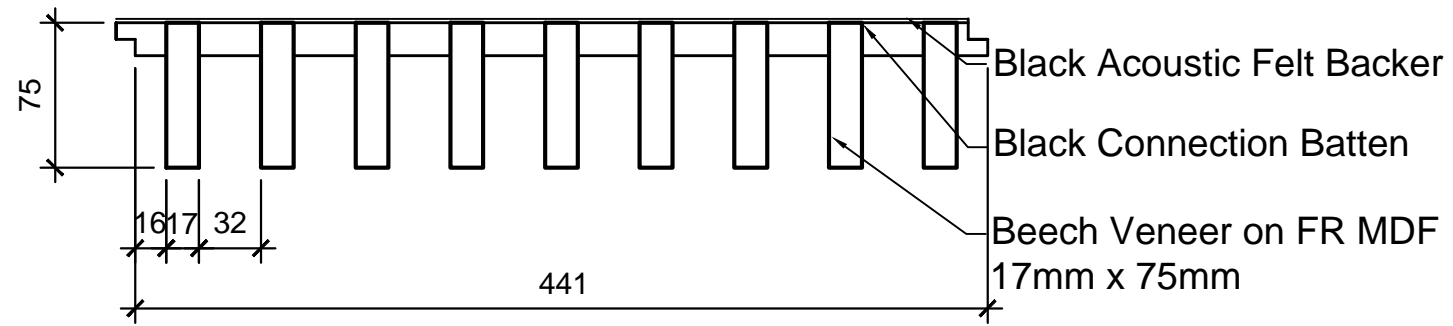


FSC® Certified products available from our UK office.

The mark of responsible forestry

STANDARD GRILL™ & DEMOUNTABLE GRILL™ SIZES *(Custom sizes and configurations available)*

TYPE ID FOR SPECIFICATION	# of BLADES	BLADE Width x Depth (mm)	SPACING BETWEEN BLADES (mm)	MODULE SIZE Length x Width (mm)
GRILL™ 3/3180/69	3	31 x 80	69	2700 x 305
GRILL™ 4/2665/49	4	26 x 65	49	2700 x 305
GRILL™ 5/2055/40	5	20 x 55	40	2700 x 305
GRILL™ 6/1745/33	6	17 x 45	33	2700 x 305
DEMOUNTABLE GRILL™ 10/1745/41	10	17 x 45	41	610 x 610
DEMOUNTABLE GRILL™ 12/1745/31	12	17 x 45	31	1220 x 610
DEMOUNTABLE GRILL™ 5/2080/95	5	20 x 80	95	610 x 610

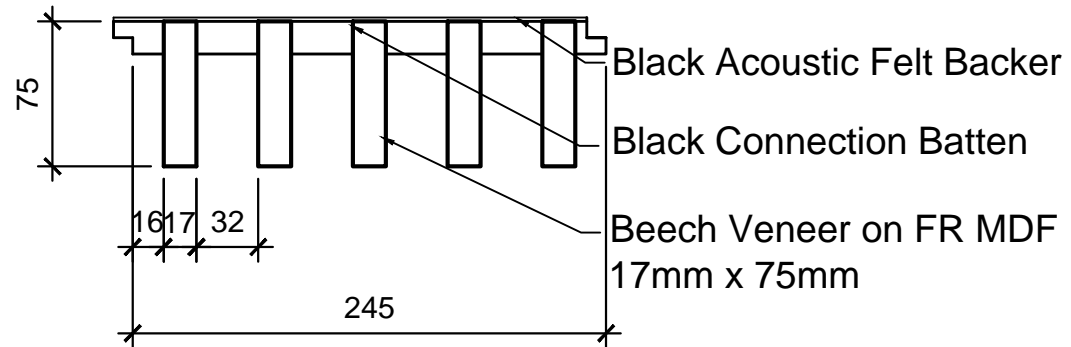


TYPICAL GRILL - 9 / 17 / 75 / 32

PANEL MODULES 441mm X 2180mm X75mm - QTY: 154 UNITS

PANEL MODULES 441mm X 1550mm X75mm - QTY: 18 UNITS

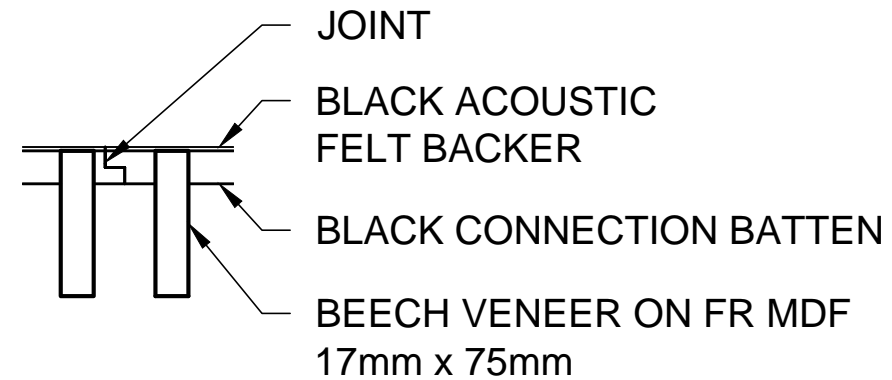
1 TYPICAL GRILL
G1 SCALE: N.T.S.



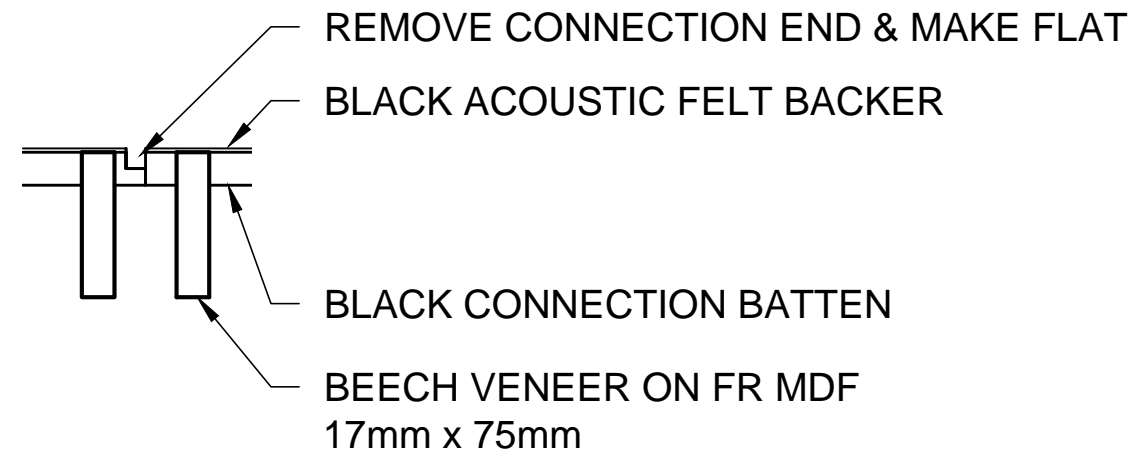
FILLER GRILL - 9 / 17 / 75 / 32

PANEL MODULES 245mm X 2180mm X75mm - QTY: 16 UNITS

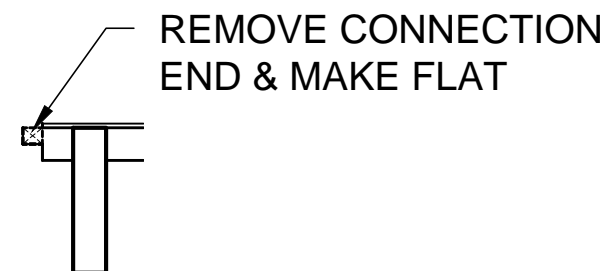
2 FILLER GRILL (TO BE CUT ON SITE TO SUIT)
G1 SCALE: N.T.S.



3 TYPICAL GRILL JOINT - OVERLAPPING
G1 SCALE: N.T.S.



4 TYPICAL GRILL JOINT @
REMOVABLE GRILL
G1 SCALE: N.T.S.



5 TYPICAL GRILL JOINT @
REMOVABLE GRILL
G1 SCALE: N.T.S.

EOMAC NOTES

MATERIAL:
EOMAC GRILL 9 / 17 / 75 / 32
FINISH: BEECH
CLEAR POLYCRYLATE LACQUERE
MDF FR CORE
BACK: BLACK FLEECE
WOOD BACKERS: BLACK
SIZE: 2180x441x75
SLATS: 9 - 75mm DEEP WITH 32mm GAP OR
SLATS: 5 - 75mm DEEP WITH 32mm

LINE DENOTES EXTENT OF TOPLINE

ISSUE FOR
INFORMATION/
APPROVAL

NOTES

REV. DATE



10 Perdue Court Unit 1, Caledon
Ontario, Canada, L7C 3M6
Tel: (905) 970 8059
Fax: (905) 970 8067

www.eomac.com

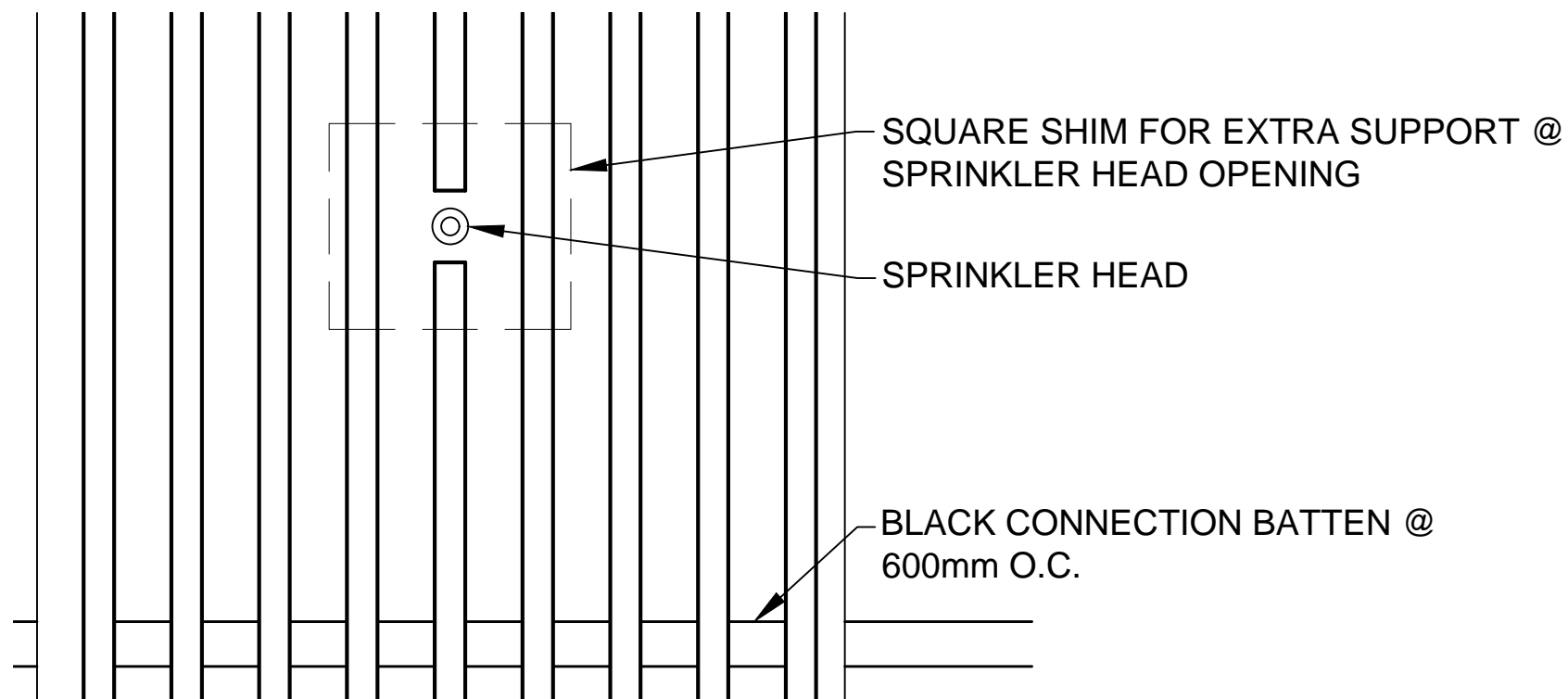
© COPYRIGHT EOMAC LTD / EOMAC UK LIMITED
ALL RIGHTS RESERVED. NO PART OF DOCUMENT WHETHER
PRINT FORM OF SUPPLIED AS DIGITAL DATA MAYBE
REPRODUCED IN ANY MEANS WITHOUT PRIOR PERMISSION OF
EOMAC LTD.

PROJECT

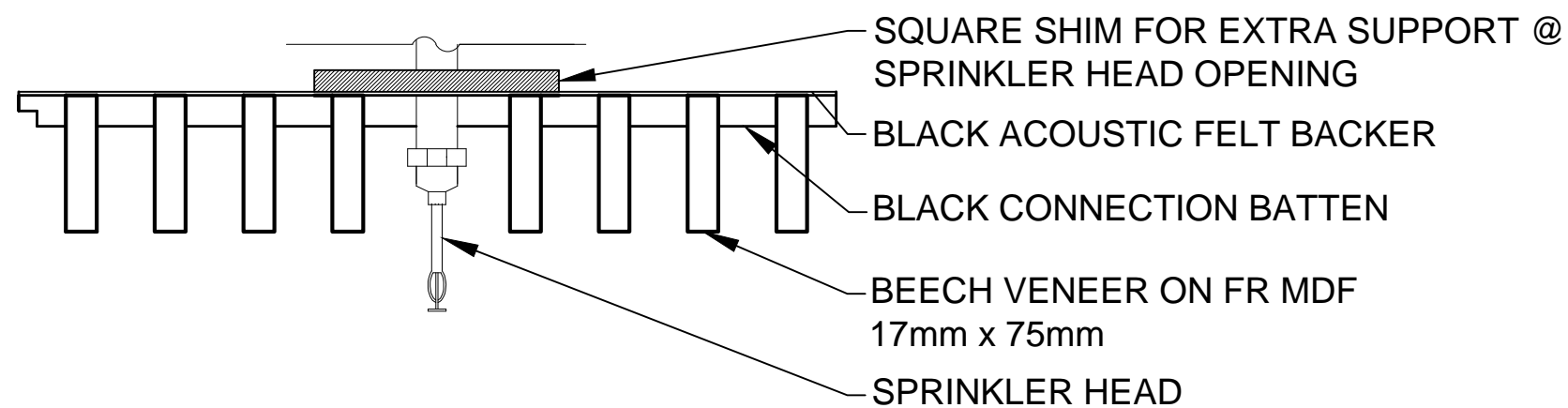
**TYPICAL GRILL
DETAILS**

DRAWING TITLE
DETAILS

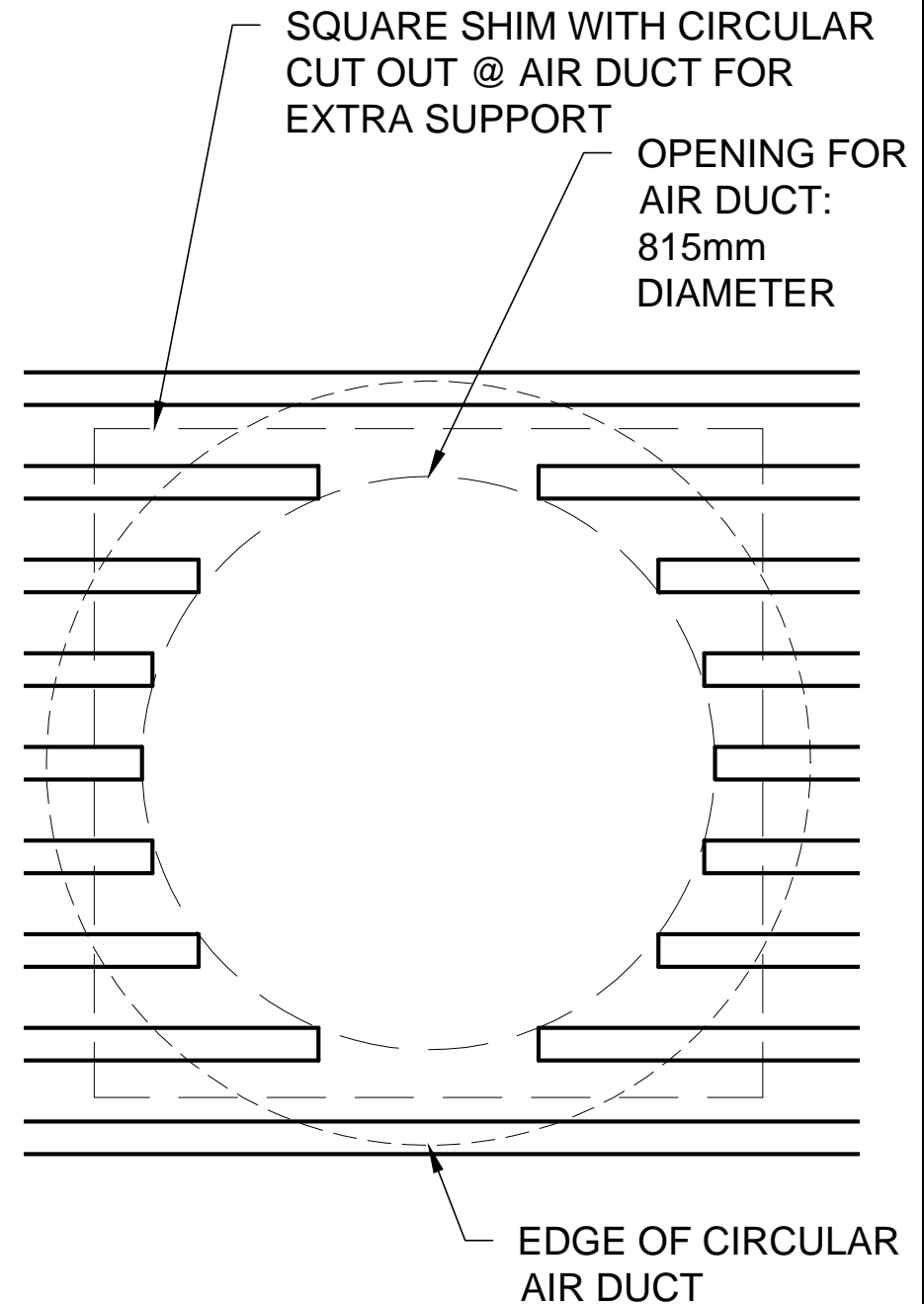
DRAWN BY S.C.	CHECKED BY K.B.	SHEET EG1
SCALE AS NOTED	DATE 06/ 24/ 15	



1 TYPICAL GRILL @ SPRINKLER HEAD
G2 SCALE: N.T.S.



2 ELEVATION - C (HALL 1)
G2 SCALE: N.T.S.



2 TYPICAL DETAIL @ CIRCULAR AIR DUCTS
G2 SCALE: N.T.S.

EOMAC NOTES

MATERIAL:
EOMAC GRILL 9 / 17 / 75 / 32
FINISH: BEECH
CLEAR POLYCRYLATE LACQUERE
MDF FR CORE
BACK: BLACK FLEECE
WOOD BACKERS: BLACK
SIZE: 2180x441x75
SLATS: 9 - 75mm DEEP WITH 32mm GAP OR
SLATS: 5 - 75mm DEEP WITH 32mm

LINE DENOTES EXTENT OF TOPLINE

ISSUE FOR
INFORMATION/
APPROVAL

NOTES

REV. DATE



10 Perdue Court Unit 1, Caledon
Ontario, Canada, L7C 3M6
Tel: (905) 970 8059
Fax: (905) 970 8067

www.eomac.com

© COPYRIGHT EOMAC LTD / EOMAC UK LIMITED
ALL RIGHTS RESERVED. NO PART OF DOCUMENT WHETHER
PRINT FORM OF SUPPLIED AS DIGITAL DATA MAYBE
REPRODUCED IN ANY MEANS WITHOUT PRIOR PERMISSION OF
EOMAC LTD.

PROJECT

TYPICAL GRILL
DETAILS

DRAWING TITLE
DETAILS

DRAWN BY S.C.	CHECKED BY K.B.	SHEET EG2
SCALE AS NOTED	DATE 06/ 24/ 15	



Veneer Colour Selection Guide

Light Coloured Veneers



Curly Maple



Tuliptree



Ice Birch



Plain Sycamore



Figured Sycamore



Basswood



Birch



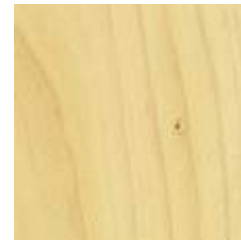
Hard Maple



Yellow Birch



Koto



Ginkgo



Chen Chen



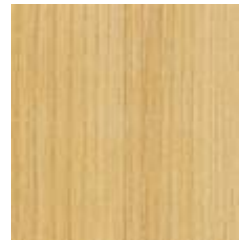
Avodire



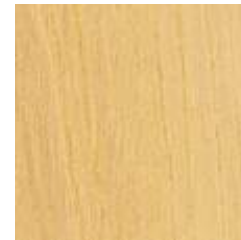
Iroko



Bamboo



Sen



White Ash



Spruce



Fir



Pine



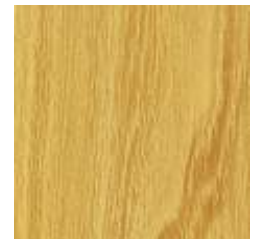
Cembra Pine



Goiabao



Satinwood



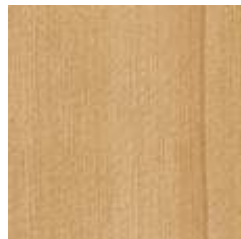
Locust



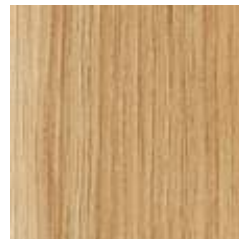
Olivetree



Eucalyptus



Hemlock



Hickory



Magno



Figured Eucalyptus



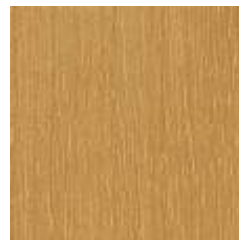
Lebanese Cedar



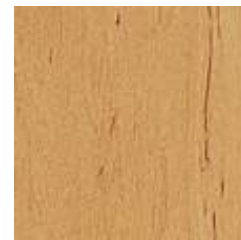
Silver Oak



European Lacewood



Limba



Alder



Chestnut



Veneer Colour Selection Guide

Medium Coloured Veneers



European Oak



American White Oak



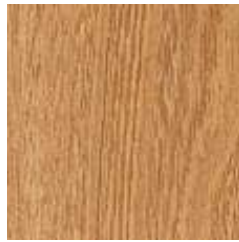
Knotty Oak



Beech



Red Oak



European Elm



Sassafras



Swietenia



Red Elm



Aspen



Figured Anegre



Anegre



Movingui



European Cherry



Larch



Rauli



Curupixa



Red Alder



European Maple



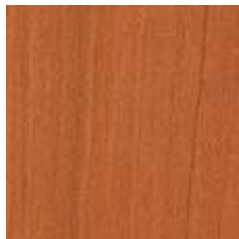
Swiss Pear



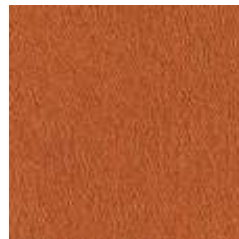
Yewtree



Madrone



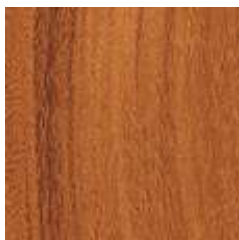
American Black Cherry



Planetree



Redwood



Afrormosia



Plumtree



Olive Ash



Apple



Tulipwood



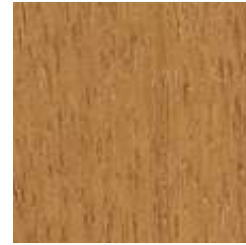
Cedar



Sapele



Zebrawood



Doussié



Courbaril



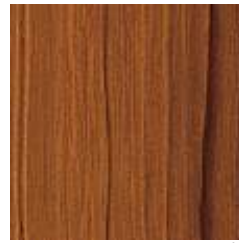
Cerejeira



Brazilian Lacewood



Silky Oak



Teak



Red Gum



Guanacaste



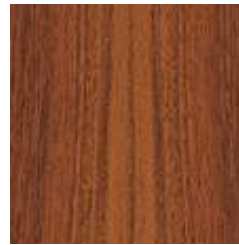
Ovangkol



Paldao



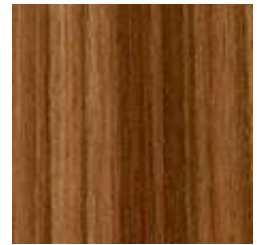
Jatoba



European Walnut



Black Walnut



Etimoé



Goncalo Alves



Santos Rosewood



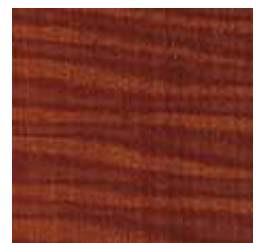
Bubinga



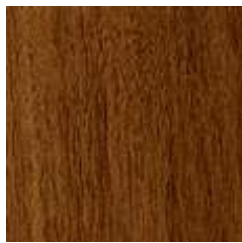
Moabi Pommele



Macore



Figured Macore



Angico Preto



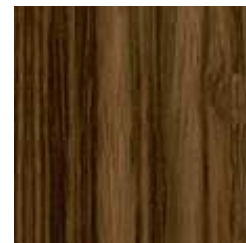
Rio Rosewood



Grenadillo



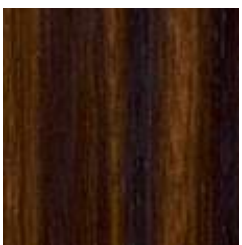
Louro Preto



Mango Tree



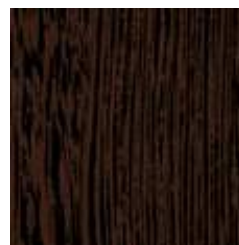
Bocote



Amara



Ipe



Wenge

* This colour chart is only a representation of veneers available. Slight variations do occur between the colour chart and actual product. Contact us for a veneer sample.



GRill™

WOOD VENEERED ACOUSTIC PANELS

SAMPLES

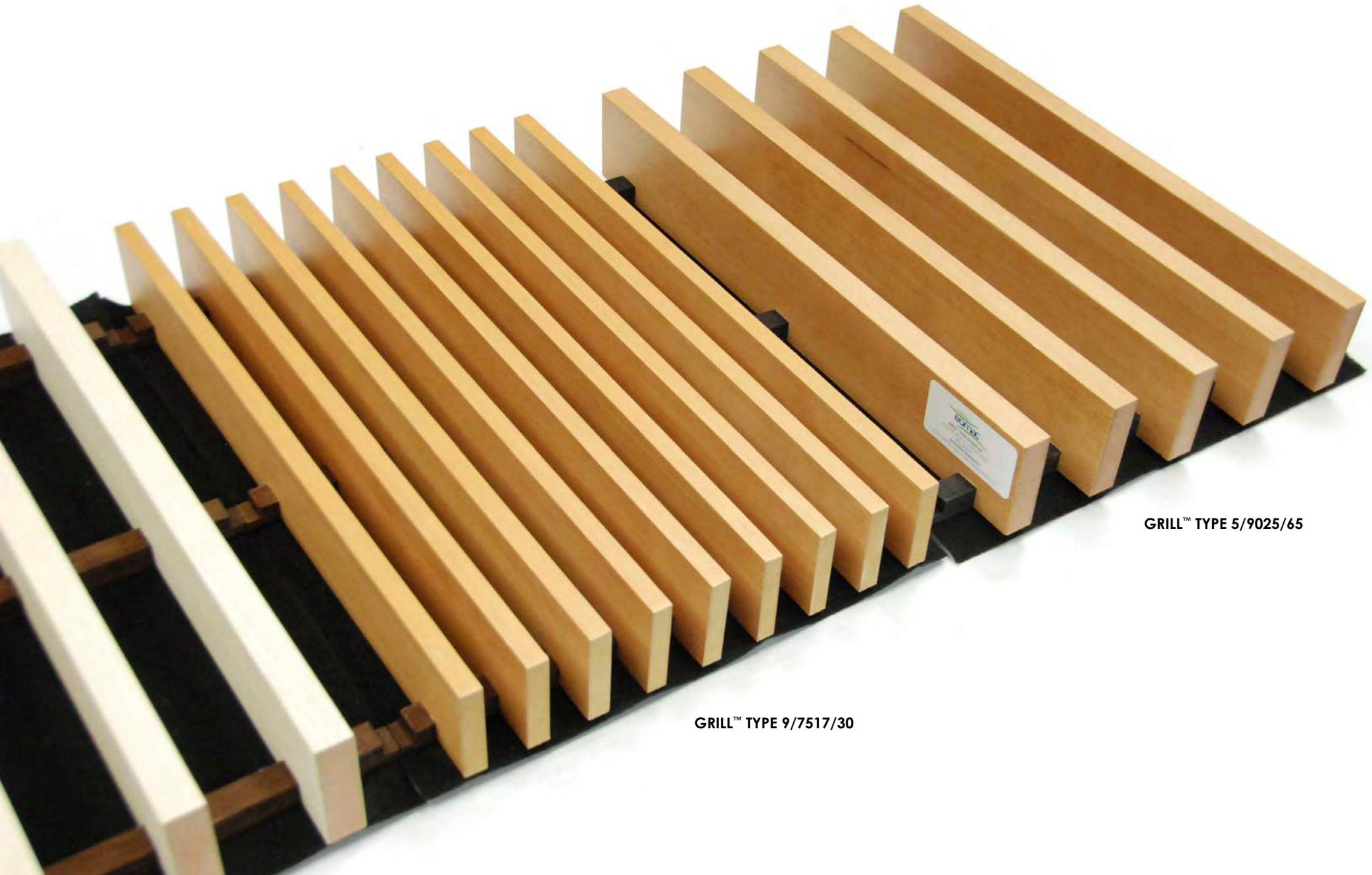
TYPE/STYLE IDENTIFICATION

Example:

4 Blades per Module / Blades 35 mm (Wide) x 88 mm (Deep) / 41 mm Spacing

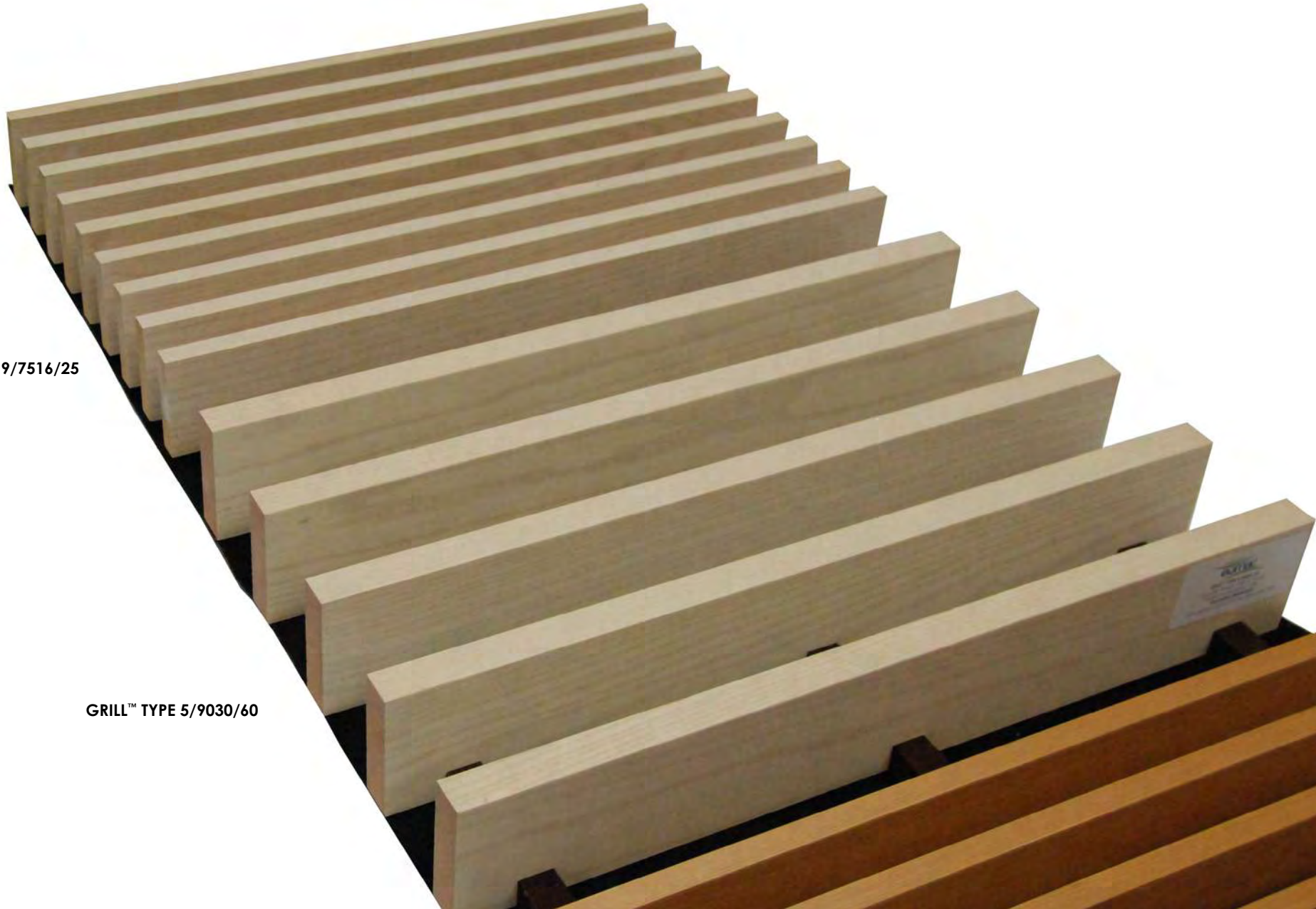
Specified as: **eomac GRILL™ TYPE 4/3588/41**





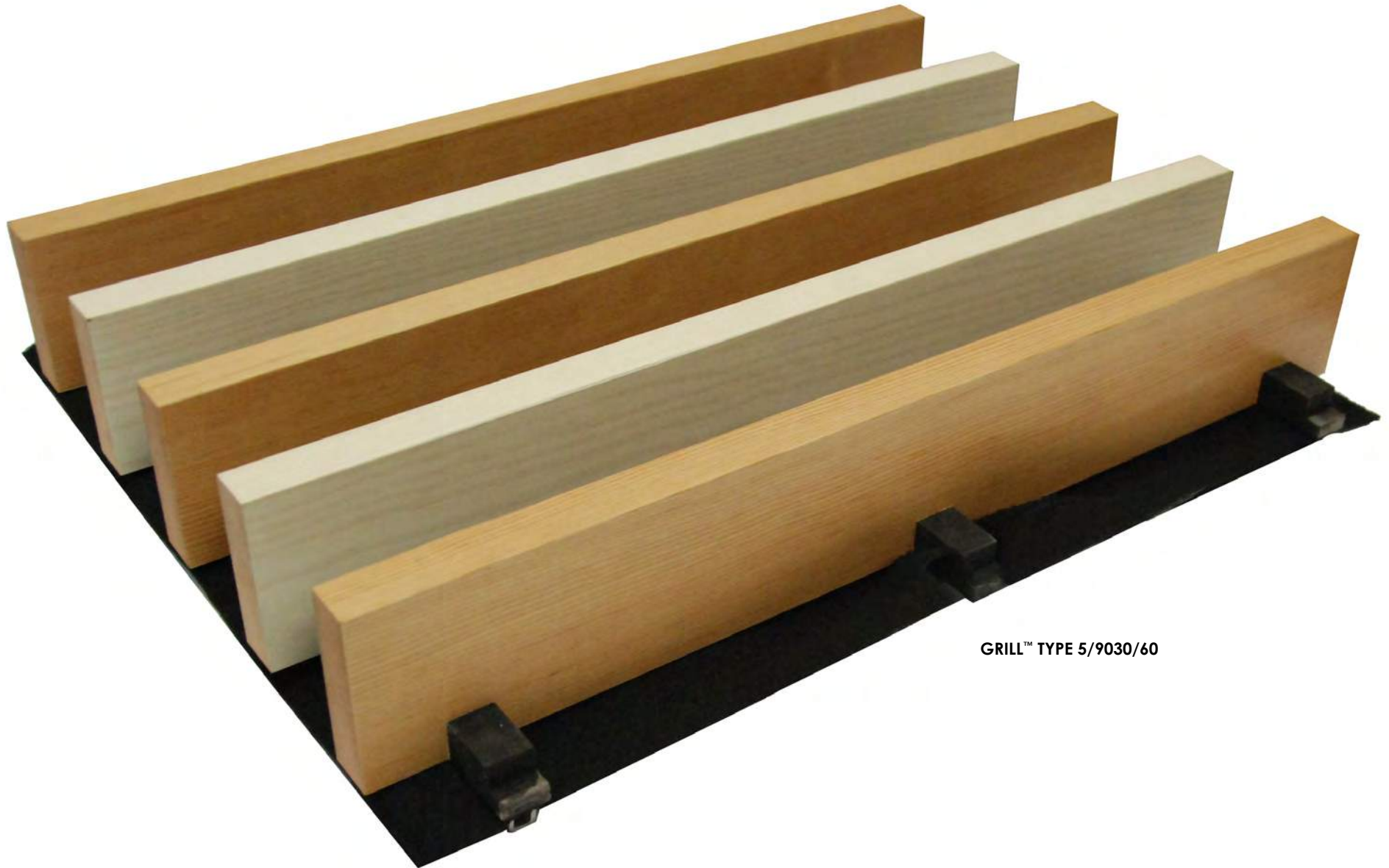
GRILL™ TYPE 5/9025/65

GRILL™ TYPE 9/7517/30

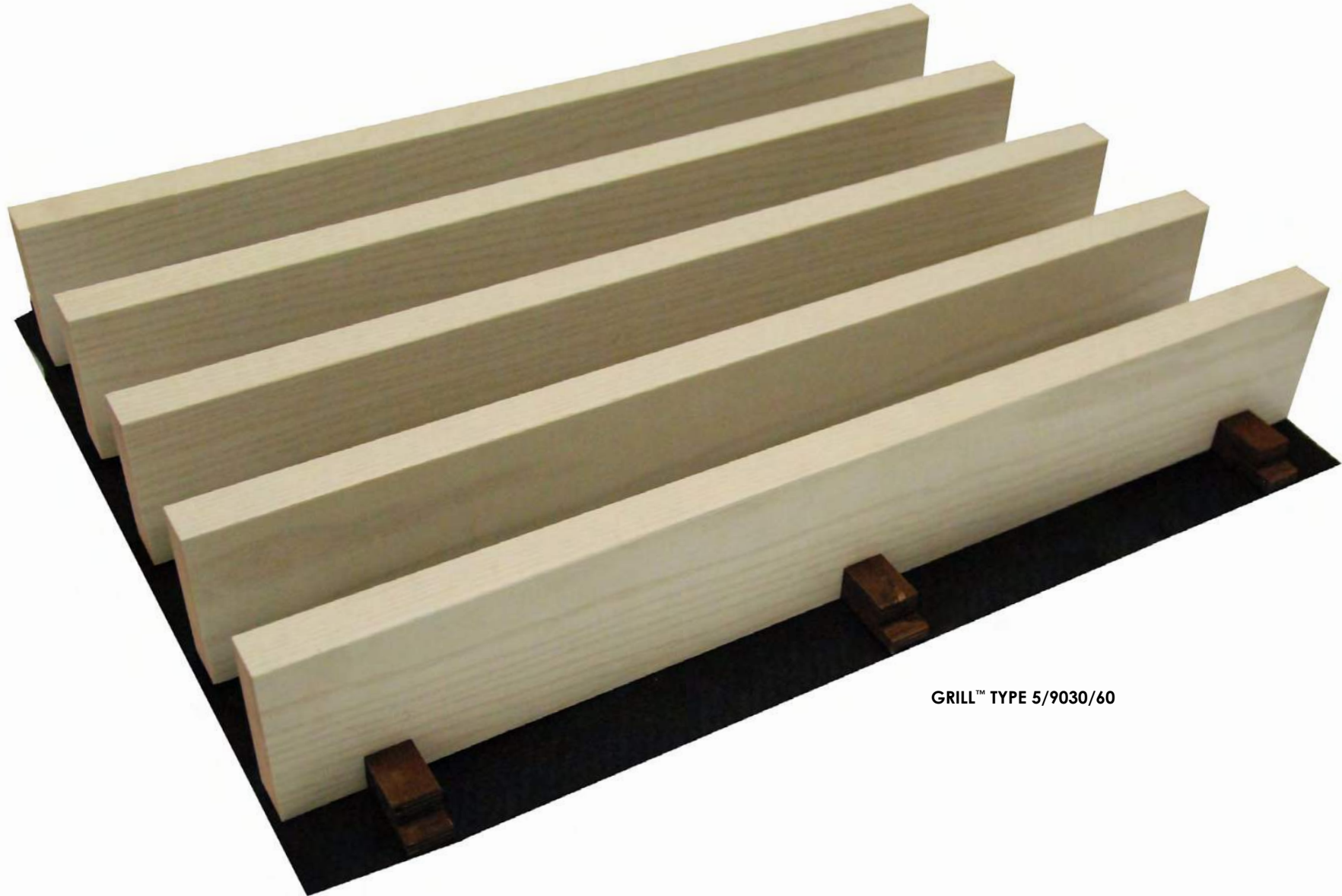


GRILL™ TYPE 9/7516/25

GRILL™ TYPE 5/9030/60

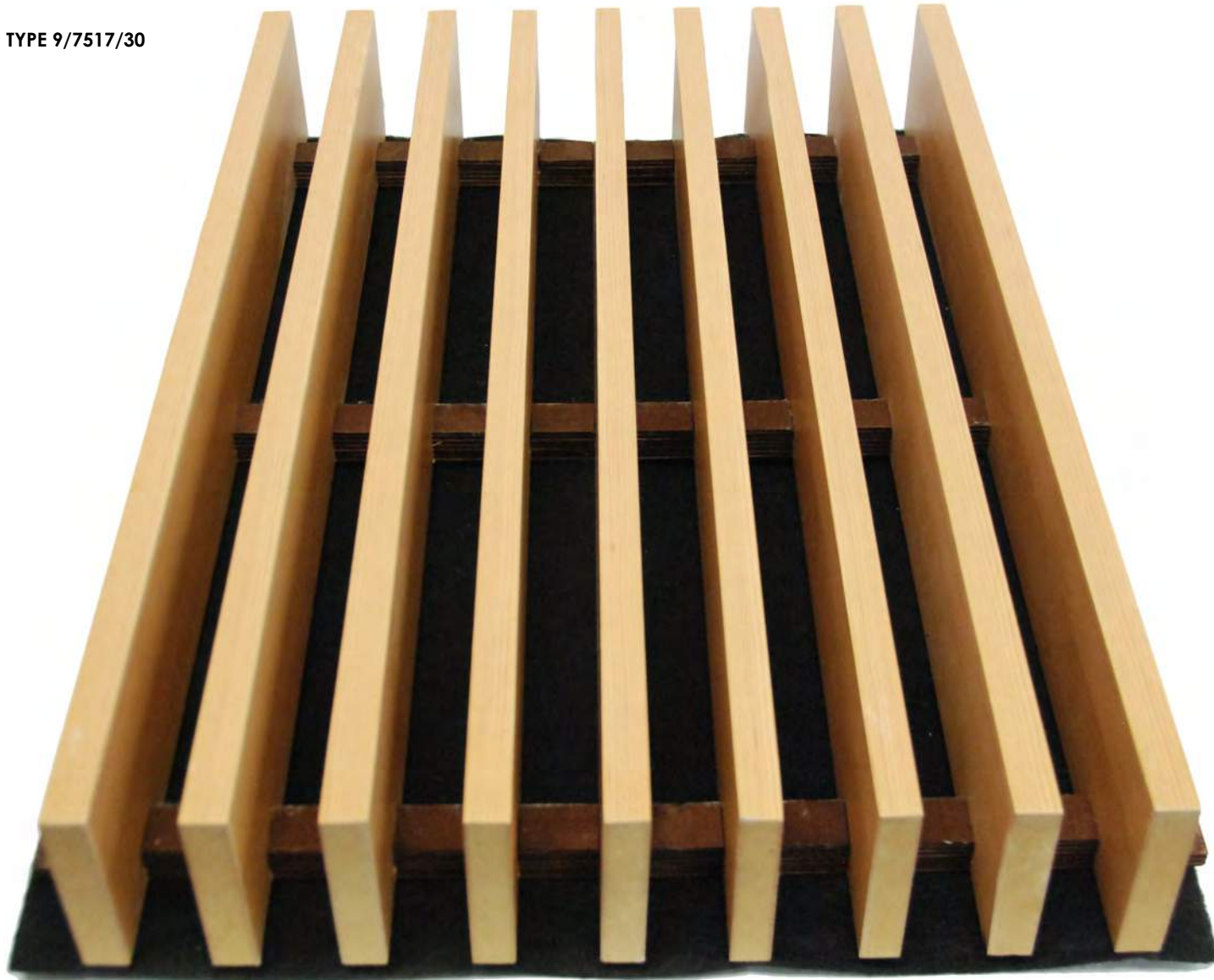


GRILL™ TYPE 5/9030/60



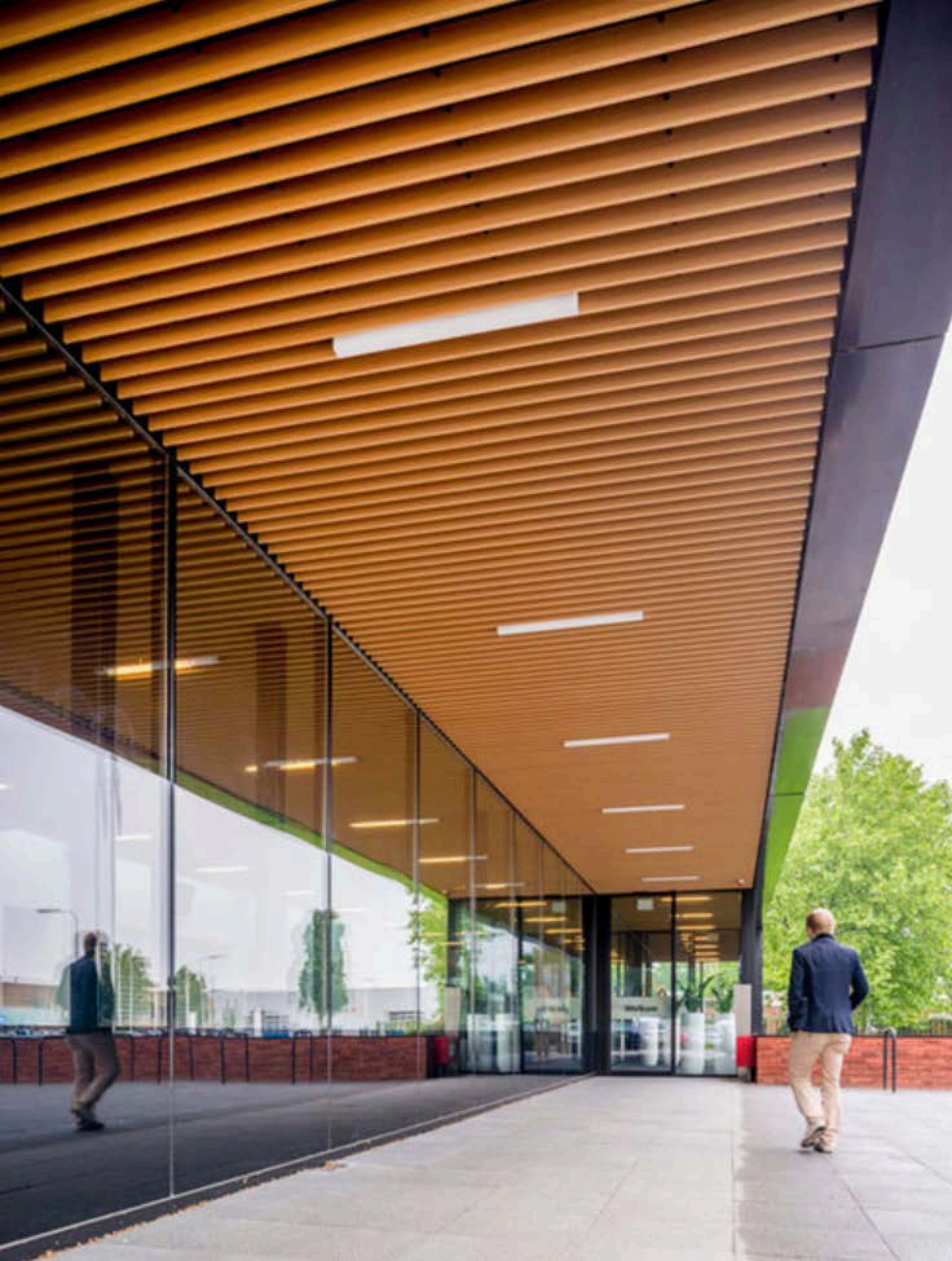
GRILL™ TYPE 5/9030/60

GRILL™ TYPE 9/7517/30













FPF
CIDADE
DO FUTEBOL

